

## Round 8



Calum MacQueen prepares to do battle

<b>Burnett, Andrew</b>	<b>1/2-1/2</b>	<b>Bremner, Adam</b>
<b>Michielsen, Joost</b>	<b>1/2-1/2</b>	<b>Berry, Neil</b>
<b>Sreeves, Clement</b>	<b>1-0</b>	<b>Kilpatrick, Callum</b>
<b>Steil-Antoni, Fiona</b>	<b>1/2-1/2</b>	<b>MacQueen, Calum</b>
<b>McNab, Colin</b>	<b>0-1</b>	<b>Hamitevici, Vladimir</b>

**S**ometimes chess can be a strange game! Callum Kilpatrick needed only a draw for his final IM norm. He was playing his friend Clement Sreeves, who duly obliged with a draw offer after the opening. Callum -for reasons I have yet to discover –declined and promptly lost to an excellent combination!

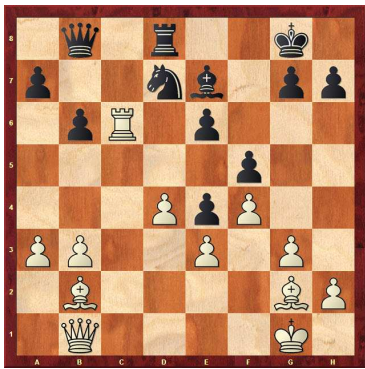
Joost's run of victories was finally brought to an end by Neil Berry, whose play with the black pieces has been fantastic. The draw ensured tournament victory for the Dutchman however after Callum lost.

Fiona and Calum evidently had better things to do today, so halved out quickly, while I thought I had finally scored my first full point, only to have my dreams shattered by Adam's creative and active defence. Vlad downed Colin and his notes to this game are well worth reading through.

**(36) Burnett, Andrew (2209) – Bremner, Adam (2189) [E07]**

Winter Chess Festival -Premier (8.1), 04.01.2014

1. d3 f6 2. c4 e6 3. c3 b6 4. g3 b7 5. g2 e7 6. 0-0 7. b3 d5 8. e3 c6 [8...c5 has been the most common choice here from my opponents. My recent games in the Prague Open 2014 saw this arise 3 times!] 9. b2 bd7 10. d4 c8 11. e1! N c7 12. c1 b8 13. a3 [13. e4?! dxe4 14. dxe4 dxe4 15. e4 c5 and the rook doesn't have a really good square to go to, whereas black's army is starting to look well-placed.] 13... a8 14. cxd5 cxd5! I really didn't like this move for black at the time, and I still don't! However, the engine seems to think it's ok so there is probably a tactical justification somewhere down the line! [14...exd5 15. d4 f8 16. d5 f8 looks perfectly decent for black] 15. d5 fd8 16. f4 d4 17. dxe4 dxe4 18. c8 c8 19. b1 f5! Again I didn't approve of this move and again the engines tell me to shut up! 20. c1 b8 21. d6 c6 22. c6



c8? It's only this move which is a real mistake though. [22... b7! and here is the tactical justification for black's play I spoke of earlier. 23. e6 (23. c2 d5!) 23... f7 and the rook is trapped, although there are some interesting possibilities here for white, e.g. 24. e4 fe4 25. xe4 c8 26. xh7 when I have 4 pawns for the rook and all the light squares are mine. I am not too disturbed by the engine's evaluations though – I'm playing a human with a clock ticking! ] 23. c2?! [23. e6 I am very disturbed at my decision not to play this though! I somehow failed to see that after 23... f7 24. d5 c7 I had the very simple 25. c6 winning. If black can't control the c-file quickly then white has gained a very important pawn and black must be extremely careful not to fall prey to a quick sacrifice on e4.] 23... c6 24. c6 d6 25. c8+ f7 26. f1 d6 27. c4 d5 28. f2 c7 29. a6 g5 30. c1 gxf4 31. gxf4 d6 I have to be very careful here not to allow a sac on f4, although black could only draw after this of course. 32. b5 f8 33. d2 e7 34. xd5 h4+ 35. f1 h3+ 36. e1 exd5 37. xd5 e7 [37... xa3! looks a bit dangerous after 38. b4] 38. c4 g4 39. b4 g1+ 40. d2 xh2+ 41. c3 g1 42. c8+? simply a bad move as I had missed that after [42. xe7+ xe7 is likely drawn also] 42... g7 43. c4 [43. xe7 c1+ picks up my queen!] 43... xb4 44. d7+ f6 45. axb4 xe3 46. d6+ f7 47. d5+ and now white has to force a perpetual 47... f6 48. e5+ g6 49. e6+ g7 50. e5+ 1/2-1/2

**(37) Michielsen, Joost (2343) – Berry, Neil (2242) [C67]**

Winter Chess Festival -Premier (8.2), 04.01.2014

1. e4 e5 2. d3 d6 3. b5 f6 The Berlin Defence to the Ruy Lopez. This was Kramnik's 'wall' which Kasparov banged his head against in their World Championship match in 2000, and which now appears in the repertoire of almost every top player. 4. 0-0 xe4 5. d4 d6 6. xc6 dxc6 7. dxe5 f5 8. xd8+ xd8 9. d3 e8 10. h3 h5 11. a3N e7 12. e1 e6 13. g5 d8 14. ad1 h4 15. xd8+ xd8 16. e4 xg5 17. d5 xg5 e7 18. dxe6 xe6 19. de2 d8 20. d4+ e7 21. f1 Another extremely solid game by Neil and this draw gave Joost outright tournament victory with a round to spare! A phenomenal effort! 1/2-1/2

**(38) Sreeves, Clement (2254) – Kilpatrick, Callum (2350) [A36]**

Winter Chess Festival -Premier (8.3), 04.01.2014

1. c4 d6 2. g3 g6 3. g2 g7 4. d3 0-0 5. e4 d6 6. ge2 c5 7. 0-0 d6 8. d3 This is the Botvinnik System in the English, an opening which Clement has been using with some success over the last few years. It's complex, positional basis suits him perfectly. 8... a6 9. a4 b8 10. h3 d8 11. e3 e5 12. d5 d7 13. dec3N d6 14. b1 Round about here Clement apparently offered a draw, which was rejected! When I heard this I was shocked as Callum only needed a draw for his final IM norm. Very strange if true?! 14... d4 15. b4 cxb4 16. dxb4 e6 17. bd5 f5 18. exf5 gxf5 19. f4 both sides have played their typical thrusts on the k-side but the equilibrium hasn't really been disturbed. 19... h8 20. h2 f7 21. d2 g8?! I'm not overly-keen on this move as play is not restricted to the k-side. [21... d7 looks more natural when 22. b6 (22. b6 might still be best here, but things get very messy after 22... e8 23. fb1 a5 24. xd4 exd4 25. d5!?) all very well and good if you are a chess engine, but not so simple for carbon life-forms!) 22... d8 doesn't particularly improve white's position. White still has a plus, naturally, as he has slightly more space, but it's nothing serious as of yet.] 22. b6 f8 23. fb1 g7 24. f2 h5 Black's major pieces are a little bit too remote from each other and white can exploit this immediately with 25. h4 [25. xd4 d4 26. xa6 although 26... h4! introduces some randomness into the equation, hence the safer text move.] 25... f7 26. d4 c8



27. ♖xb7!? I saw this move as it was played and I feared for Callum at this point. If such a move works then it usually works very well! If it's simply bad, then it's doubtful if Clement would have even entertained it as he had a clear advantage anyway. 27... ♗xb7 28. ♜xc6 ♖xb1 29. ♜xb1 ♜xc6 30. ♜c3 [30. ♗e2!? ♕f7 31. ♗d5! is a nice motif, though not necessarily stronger than other moves here.] 30... ♜d8 31. fxe5 dxe5 32. ♗h6 ♖f7 33. ♗xf8 ♖xf8 34. ♗e2 Having cleared a few bits out of the way first, Clement proceeds to show much much stronger the queen is in this kind of position where the rooks have no clear purpose. 34... ♜f7 35. ♗d5! ♗xd5 36. ♜xd5 ♜g7 37. ♗xh5 ♜h6 38. ♗g5+ ♜h7 39. ♜e7 Queen and knight are a terrifying combination in attack, basically because between them they can produce the moves of ALL the pieces combined! 39... ♖g8 40. ♗h5 [40. ♜xg8 is winning also, but Clement reaches the time control first so he can think about what he wants to do without the clock distracting him.] 40... ♖cf8 41. ♜xg8 ♖xg8 42. ♜h3 ♖d8 43. ♗f3 ♜g6 44. ♗c6+ ♜h5 45. ♗f6! ♖g8 46. ♗xe5 ♖g4 47. ♗e8+ ♖g6 48. c5 ♜g4 49. c6 f4 50. ♗xg6+ and this simple move ties things up 50... ♜xg6 51. ♜xg4 fxg3 52. ♜xg3 an excellent game from Clement who definitely proved he would have been in the mix had he been able to play the whole tournament. Callum could still reach his IM norm score with a final round draw. 1-0

**(39) Steil-Antoni, Fiona (2190) – MacQueen, Calum (2240) [B23]**

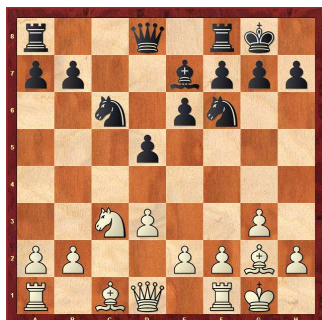
Winter Chess Festival -Premier(8.4), 04.01.2014

1.e4 c5 2. ♜c3 e6 3.f4 d5 4. ♗b5+ ♗d7 5. ♗e2 dxe4 6. ♗xd7+ ♗xd7 7. ♜xe4 ♜c6 8. ♜f3 ♗e7 9.d3 ♜f6 10.0-0 11. ♜h1 1/2-1/2

**(40) McNab, Colin (2457) – Hamitevi-ci, Vladmir (2508) [A11]**

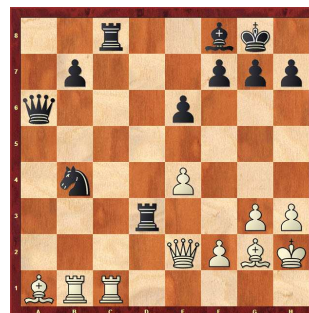
Winter Chess Festival -Premier (8.5), 04.01.2014  
[notes by Vlad Hamitevic]

1.c4 c6 2. ♜f3 d5 3.g3 ♜f6 4. ♗g2 ♗g4 5.cxd5 ♗xf3 [after 5...cxd5?! 6. ♜e5 ♗f5 7. ♜c3 e6 8.g4 ♗g6 9.h4± black might face serious problems] 6. ♗xf3 cxd5 7. ♜c3 e6 black builds solid structure against light-square bishop 8.d3 recently Carlsen tried to get some advantage against Caruana with d4, but didn't succeed with that. [8.d4 ♜c6 9.0-0 ♗e7 10.e3 0-0 11.b3 ♗a5 12. ♗b2 ♗a3 13. ♗c1 ♗xb2 14. ♗xb2 ♖fc8 = Carlsen, M (2864)–Caruana, F (2774)/Moscow RUS 2013] 8... ♜c6 9.0-0 ♗e7 10. ♗g2 0-0

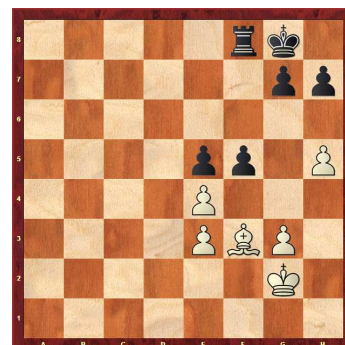


11.e4 here comes the idea of 8.d3, White tries to break the center and open up diagonal for bishop on g2, which

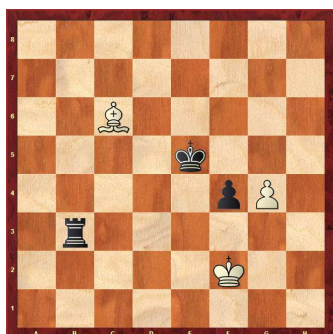
will give White decent advantage thanks to 2 bishops. 11...d4 typical reaction, game transformed to kind of reversed KID, but black has already open c-file plus exchange of light-square bishop for a knight looks like achievement 12. ♜e2 ♖c8 13.b3 [13.f4? would lead to 13... ♜g4 and Ne3 will be pretty annoying] 13... ♗a5 black threats to swap dark square bishops to penetrate faster on queen's side 14.a3 ♖fd8 simple prophylactic defence of d4 pawn 15. ♗b2 ♗b6 16. ♖b1 [16.b4 a5±] 16...a5 17.h3 ♜d7 knight comes to c5, and this is gonna be really hard for White to protect d3 and b3 at same time 18. ♜h2! very good move, White did the prophylactic to try to push f4 [18.f4? ♜c5 19.b4 axb4 20.axb4 ♜xb4 21. ♗xd4 ♖xd4 22. ♜xd4 ♜ca6] 18... ♜c5 [18...e5!? was an interesting option as well 19.f4 ♜c5 20.fxe5 ♗xb3 21. ♜f4 ♗xd1 22. ♖fxd1 ♗f8±] 19.b4 [19. ♗a1 passive defence doesn't look promising for White 19... ♗b5 20. ♜c1 ♜a4 21. ♜e2 ♜c3 22. ♜xc3 dxc3+ the difference of quantity active pieces between black and white is tremendous] 19...axb4 20.axb4 ♜a6 [20... ♗xb4 21. ♗xd4 ♗a3 22. ♗xc5 ♗xc5 23. ♖xb7 ♖xd3 this is a computer suggestion, but it feels that White is pretty close to hold this] 21.b5 ♗xb5 22. ♜xd4 ♜xd4 23. ♗xd4 ♜b4 black keeps extra 'b' pawn but at least white doesn't have any weaknesses and their bishops start to work 24. ♗a1 [24. ♗e3 looks more accurate 24... ♗xd3 25. ♗e2 ♗d7±] 24... ♖xd3 25. ♗g4?! losing of time 25... ♗f8 26. ♗e2 ♗a6 27. ♖fc1



♖dd8! black offers to exchange the queens, to get extra strong passed 'a' pawn, which will come to a2 pretty easy with support of Bishop on f8 and Knight on b4 28. ♗e3 ♜c2 29. ♗f4 b5 30. ♗b2 b4 31.h4 ♗a5 preventing h5 and taking control of d2 square for a rook. 32. ♗f3 b3 33. ♜g1 ♗a3 34. ♖a1 white tries to use last tricks, otherwise trade of bishops will be the end of a game [34. ♗xa3 ♗xa3 35. ♗h5 f6 36. ♖d1 e5 37. ♗f3 ♖xd1+ 38. ♖xd1 ♜d4] 34... ♜xa1 [34...e5 was more accurate, but Na1 is good as well] 35. ♖xa1 ♖c2! 36. ♗xa3 [36. ♖xa3 ♗e1+ 37. ♜h2 ♗xf2+ 38. ♜h3 ♖xb2] 36... ♖a2 37. ♖xa2 bxa2 38. ♗b2 a1 ♗+ 39. ♗xa1 ♗xa1+ 40. ♜g2 ♗d4 time control passed, Black got technically winning position 41. ♗h5 f5! pinning the white queen 42. ♗f3 ♖f8 White can't stop fxe4 and trading a queens 43.h5 e5 44. ♗e3 ♗xe3 45.fxe3



g6? beginning of the end :) with less pawns on a board white's chances to survive increase [45...fxe4 46.♗xe4 ♖f6 would lead to easy win, black's King will come or to g5 or d2] **46.hxg6 hxg6 47.exf5 gxf5 48.g4** [48.e4 fxe4 49.♗xe4 ♗g7 50.♗c6 ♗g6 51.♗e4+ ♗g5 52.♗d5 ♖d8 53.♗c4 ♗f5; 48.♗d5+!! ♗g7 49.g4! ♗f6 (49...f4 50.♗f3 ♗g6 51.♗e4+ ♗g5 52.♗f5 ♖a8 53.exf4+ exf4 leads to position what we got in the game, but unfortunately it's draw according to nalimov's tablebases) 50.gxf5 ♗xf5 51.♗f2 draw according to nalimov's tablebases] **48...f4?** [48...e4! only way to win 49.♗e2 f4 50.exf4 ♖xf4 51.♗g3 ♖f8+] **49.♗e4 ♗g7 50.♗f5 ♗f6 51.♗f3 ♗g5 52.exf4+ exf4 53.♗d7 ♖a8 54.♗f5 ♖a3+ 55.♗f2 ♗f6 56.♗e4 ♗e5** black's idea to put rook on g3 and provoke Bf3, then come back with King to g5 and bring king to h3 **57.♗c6 ♖b3**



**58.♗a4??** [58.♗d7!= both of these moves should lead to a draw, black doesn't have breaking through the fortress of both pawns and bishop as a diagonal guard; 58.♗e8!=; 58.♗a8? here is black idea 58...♖g3 59.♗f3 ♗f6 60.♗e2 ♗g5 61.♗f3 ♗h4 62.♗d1 ♖a3 63.♗e2 **a)** 63.♗f3 ♖c3 64.♗e2 ♗h3+; **b)** 63.♗g2! best resistance 63...♗g5! black King goes back to e5 and White has no time to bring Bishop to play because after Bf3 black always has a check on a2, and after Be2 black will be in time to put rook on c3 to get control of c6 square to prevent Bc6 check, when King will come to e4 64.♗f2 (64.♗f3 ♖a2+; 64.♗e2 ♗f6 65.♗f2 ♗e5 66.♗b5! ♖a2+ 67.♗f3 ♖c2! 68.♗a4 ♖c1 69.♗f2 ♖c3 forcing white Bishop go to d1 70.♗d1 ♖a3! 71.g5 ♖g3+) 64...♗f6 65.♗f3; 63...♗h3 64.♗d1 ♖a2+ 65.♗f3 ♖d2 and white bishop is reach off the squares 66.♗a4 ♖d3+! 67.♗xf4 ♖d4+-+] **58...♖c3!** taking control of c2 and c6 squares and cutting up the bishop **59.♗d7** [59.♗d1 ♖a3 60.g5 ♖g3] **59...f3 60.♗g3 ♗e4 61.g5 ♖c5 62.♗f2 ♖c2+ 63.♗g3 ♖g2+ 64.♗h4 ♗f4**  
0-1

Photo by: David Oswald



IM Vlad Hamitevici in his typical relaxed pose at the board