

Round 6

Photo by: Fiona Steil-Antoni



Steely determination and excellent technical play were the hallmarks of Joost's success

Schwartz, Julius	0-1	Bremner, Adam
Steil-Antoni, Fiona	1/2-1/2	Berry, Neil
McNab, Colin	1/2-1/2	Kilpatrick, Callum
Michielsen, Joost	1-0	Burnett, Andrew
MacQueen, Calum	0-1	Hamitevici, Vladimir

After a day of rest, the players returned to battle. It was my turn to face Joost and hopefully kick-start my own tournament while ending his 100% score. Not to be, however, as an early mistake left me suffering all game and Joost's technique was up to the task.

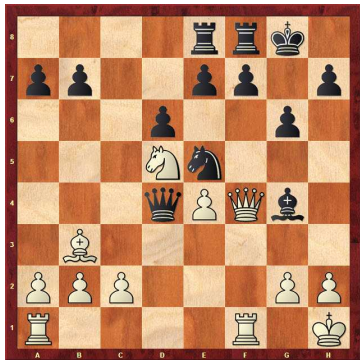
Neil Berry needed a win to have an outside chance of his 2nd IM norm, but he stood badly on both board and clock when he accepted the draw offer.

Vlad played the kind of game we were expecting from him to down Calum MacQueen while Adam won another game, this time at the expense of Julius Schwartz who was playing up from the Challengers event for the day. Colin and Callum evidently hadn't rested enough so took an extra time out after just 12 moves.

(26) Swartz,Julius (2039) – Bremner,Adam (2189) [B35]

Winter Chess Festival -Premier (6.1), 02.01.2014

It's an organiser's nightmare when somebody pulls out of an all-play-all. It had become clear that Iain Swan wasn't going to get better soon enough to rejoin the tournament, but fortunately the Challenger's players were all too happy to step into the arena with the top guys. This time it was Julius Schwartz's turn. **1.e4 c5 2.d3 d6 3.d4 cxd4 4.dxd4 g6 5.d3 g7 6.e3 f6 7.c4 a5 8.0-0 9.f3** I was trying to recall at this point if white had fallen into an opening trap here (there are a few in the Accelerated Dragon move orders) but he's probably ok. **9...c5 10.b3 g4 11.fxg4 xd4** [11...d4? 12.d5! would be winning for white as now the pin works in his favour.] **12.xd4 xd4+ 13.h1?** [13.xd4! with the idea of 13...d4 14.d5 is the correct way to play for an advantage.] **13...d6N 14.f3 d5 15.f4 xg4 16.d5 e8** Black has an extra pawn and the better structure, so white will have to drum something up quickly here. Unfortunately his next move doesn't really help this plan.



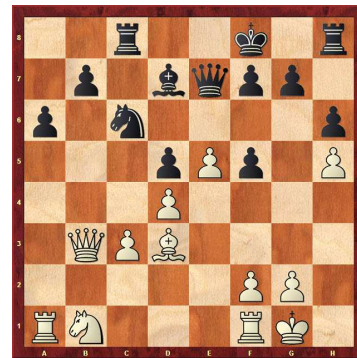
17.h3 [The engine likes 17.g5 when the only obvious way to defend e7 is by 17...d6?? but this fails to (17...e2 is better but after 18.dxe7+ Rxe7 19.xe7 xf1 20.Rxf1 white has to be doing fine with active queen, rook and bishop.) **18.xg4** 17...e2 **18.f2 c4** [18...xb2 looks to be a clear pawn for nothing; the queen still retains her activity.] **19.a4 b5 20.b3** [20.c3 c5 21.c2 xd5 22.exd5 xd5 is still excellent for black.] **20...xd5 21.xd5 xb2 22.af1 e6 23.b3 d4 24.d2 c5 25.h6 d4?!** There is nothing objectively wrong with this move, but I would never play this unless absolutely forced as the knight is perfect on e5. [25...a5 looks good instead.] **26.xc4 bxc4 27.f4 d8 28.f1 a3 29.h4 h5 30.g4?** Desperation or time-trouble or both! **30...h3+ 31.g1 xg4+ 32.xg4 hxg4 33.xd6 xd6 34.xd6 b8 35.c6 b4 36.g2 a5 37.g3 c3 38.xc3** [38.e5! would be the last real hope, but after 38...e4 39.c5 e2 40.xc3 xe5 41.xg4 black should still win comfortably enough.] **38...xe4 39.c5 a4 40.c4 xa2 41.xg4 c2 42.g5 g7 43.h5 gxh5** and here white resigned. **0-1**

(27) Steil-Antoni,Fiona (2190) – Berry,Neil (2242) [C00]

Winter Chess Festival -Premier (6.2), 02.01.2014

1.e4 e6 2.d3 d5 3.e5 c5 4.b4!? Probably not what Neil

wanted to see. He needed to win to have any chance of his IM norm. This might indicate that a sharp position is just what is required, but it's not how Neil approaches the game of chess. He tends to prefer protracted positional tussling where his feel for the simpler aspects of the position is very good. The text move leads to more random games. **4...cxb4 5.a3 bxa3 6.d4 d6 7.c3 d7 8.d3 h6 9.h4 a6 10.h5!?**N [The following game shows how quickly white can combine positional considerations with tactical play. Black finds himself only ever responding. **10.xa3 b5 11.xf8 xf8 12.h5 da5 13.d4 d4 14.f3 d7 15.Rh3 d5 16.dxf5 exf5 17.xd5 c8 18.xc4 bxc4 19.d2 b5 20.e3 a7 21.d6+ e8 22.f1 d7 23.b4 c6 24.e6 fxe6** Gajewski,G (2344)–Maslowski,M (2140)/Zakopane 2001,1-0 (31)] **10...c8 11.d4 dge7 12.xa3 d5 13.dxf5 exf5 14.xf8 xf8 15.b3 e7 16.0-0**



If white wanted to play for more she could have tried **16.xb7 dxd4 17.Rxa6** (17.cxd4!? isn't actually as bad as it looks **17...c1+ 18.e2 Rxh1 19.Rxa6** and now Nc3-d5 gives good play as the black rook is offside and unlikely to re-enter the game anytime soon. After the text move 16. 0-0, Neil decided that shortage of time and an ugly-looking position was a bad combination and so accepted the draw offer.) **1/2-1/2**

(28) McNab,Colin (2457) – Kilpatrick,Callum (2350) [A36]

Winter Chess Festival -Premier (6.3), 02.01.2014

1.c4 d6 2.g3 g6 3.g2 g7 4.d3 0-0 5.e4 d6 6.dge2 c5 7.d3 d6 8.0-0 b8 9.h3 a6 10.a4 de8 11.e3 d4 12.b1 With Callum on course for his IM norm he has no good reason to decline a draw here. Colin, perhaps, just wasn't in the mood?

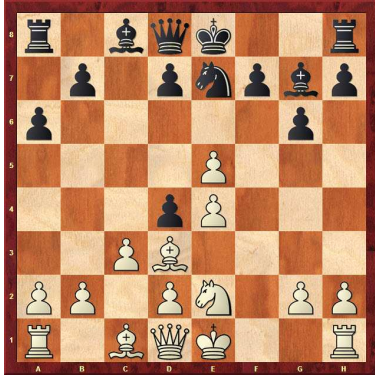
1/2-1/2



(29) Michielsen,Joost (2343) – Burnett,Andrew (2209) [B30]

Winter Chess Festival -Premier (6.4), 02.01.2014

1.e4 c5 2.♘f3 ♘c6 3.♗c3 g6 4.♙b5 Unexpected! I thought Joost would transpose into a normal open Sicilian with d4. 4...♗d4 5.♗xd4 cxd4 6.♗e2 ♙g7 7.c3 a6 8.♙d3 e5!?N 9.f4 ♗e7 10.fxe5

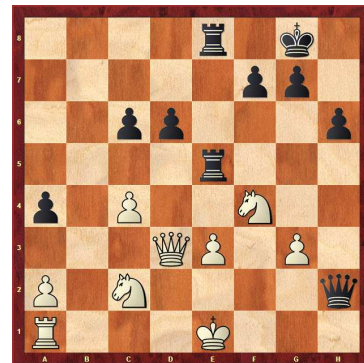


10...dxc3?! Varying from my rather interesting plan – unfortunately I was to do this too often in this tournament. The idea had been 10...♗c6 11.cxd4 0-0 12.0-0 and then either 12...♗xd4 or perhaps 12...d5 At the last second I changed my mind and played the text move, which really isn't very good as it aids white's development.)] 11.bxc3 ♗c6 12.0-0 0-0 13.♙a3 and now black has some serious problems. 13...♙b6+ 14.♔h1 ♗xe5 [I didn't much fancy 14...♙e8 15.♙c4 ♗xe5 16.♙d5 with d4 coming next, but the exchange sacrifice in the game doesn't really offer much hope either.] 15.♙xf8 ♗xf8 16.♙c2 ♙c7 17.♙b3 b5 18.♗f4 ♙b7 19.♙d5 ♙e8 20.d4! g5 Pretty much forced as [20...♗c4 allows 21.♗xg6+ hxg6 22.♙xf7+ ♔g8 23.♙xd7+] 21.♗h5 ♙xd5 22.exd5 ♗g6 23.♙f3 d6 24.a4!? Objectively a good move, but it does force white to also play quite accurately over the next few moves. 24...bxa4 25.♙xa4 g4 26.♙xg4 ♙xc3 27.♙d7 ♙e7 28.♙d8+ ♙e8 29.♙xd6+ ♔g8 30.♗xg7 ♔xg7 31.♙f6+ ♔h6 32.♙aa1! avoiding any back-rank pitfalls. 32...♙e2 33.d6 ♙e6 34.♙f3!? Joost doesn't mind putting in a long shift to collect the point. There were quicker ways to win, but this is safe and now he can show his technique. 34...♙xf3 35.♙xf3 ♔g7 36.♙f5 ♙xd6 37.♙a4 ♗e7 38.♙g5+ ♔f8 39.♙ga5 ♙d7 If I can swap my a-pawn for the white d-pawn, there are some reasonable chances of holding. Unfortunately I can't force this. 40.♙c5 ♙d6 41.♔g1 h6 42.♔f2 ♔g7 43.♔e3 ♗d5+ 44.♔e4 ♗f6+ 45.♔d3 ♗d7 46.♙ca5 ♔f6 47.♙a2 ♗b8 48.♔c4 ♙c6+ 49.♙c5 ♙e6 50.♙f2+ ♔e7 51.♙c7+ ♗d7 52.♙a7 ♙c6+ 53.♔d3 ♙d6 54.♙f5 ♔e6 55.♙a5 ♔f6 56.♔e4 [All white has to beware of is silly tactics such as 56.♙5xa6?? ♗c5+ 57.♔c4 ♙xa6 58.♙xa6+ ♗xa6] 56...♙e6+ 57.♔f4 ♗b8 58.♙f5+ ♔g6 59.♙xf7 ♙d6 60.♙g7+ ♔h5 61.♔e5 and black resigned. Another well-played game by the tournament leader. 1-0

(30) MacQueen,Calum (2240) – Hamitevici,Vladmir (2508) [E11]

Winter Chess Festival -Premier (6.5), 02.01.2014

1.d4 ♗f6 2.c4 e6 3.♗f3 ♙b4+ 4.♙d2 a5 5.g3 d6 6.♙g2 ♗bd7 7.0-0 e5 8.♙g5 exd4 9.♗xd4 h6 10.♙c1 [RR 10.♙f4 0-0 11.a3 ♙c5 12.♗c3 a4 13.♙c1 ♗b6 14.♙d3 ♙e8 15.♗e4 ♗xe4 16.♙xe4 ♙f6 17.♗b5 ♙e7 18.♗c3 ♔h8 19.♙g2 ♙f5 20.e4 ♙g6 21.♙fe1 c6 22.♙e3 ♙xe3 23.♙xe3 d5 24.cxd5 ♗xd5 Beliavsky,A (2648)–Suba,M (2537)/Bazna 2007/CBM 118 ext/½-½ (50)] 10...0-0 11.b3 a4N 12.♙b2 ♗e5 13.♗c2 ♙c5 14.♗c3 ♙d7 15.♗b5 [15.♙xb7 doesn't achieve anything in view of 15...♙b8 when white will not only lose the pawn on b3 but have a weak c-pawn for his efforts.] 15...♙c6 16.b4 ♙b6 17.♗ca3 Perhaps white should consider 17.♙xe5 when, after 17...dxe5 18.♙xc6 bxc6 19.♗c3 ♙d4 20.♗xd4 ♙xd4 he can play 21.♙d3 with a relatively level game. The text move isn't convincing.] 17...♙e8 18.♗c3 ♙xg2 19.♔xg2 ♙d7 20.b5 ♙c5 21.♗d5 [21.♗xa4 ♙xa3 22.♙xa3 ♗xc4 is not to be recommended for white whose q-side disintegrates rapidly.] 21...♗e4 [21...♗xd5 22.cxd5 ♙xa3 23.♙xa3 ♗c4 followed by taking on b5 looks very good for Vlad here. Instead he embarks on an ambitious and aggressive plan.] 22.♙xe5 ♙xe5 23.♗c2 ♗xf2!? 24.♙xf2 ♙xf2 25.♔xf2 ♙h3 Black's reasoning is that the white king is now vulnerable and his pieces are quite far from defence. 26.♙d3 [26.♔g1 doesn't help because of 26...♙h5] 26...♙xh2+ 27.♔e1 ♙ae8 28.e3 c6 29.bxc6 bxc6 This kind of position is horrible to defend 30.♗f4 [30.♗c3 was the other option when the same idea as in the game isn't so good, e.g. 30...♙xe3+ (but perhaps 30...♙xg3+ 31.♔d2 h5 would be difficult to meet, with the plan of simply pushing the h-pawn) 31.♗xe3 ♙g1+ 32.♔d2 ♙xa1]



30...♙xe3+! 31.♗xe3 ♙g1+ 32.♔d2 ♙xa1 33.a3 ♙e5 34.♗e2 ♙b8! switching entry points 35.♗c2 ♙b3 36.♙d4 h5! I don't know if white resigned here or if he lost on time (which would be unusual for a quick player like Calum)? A very good game by Vlad and it's not really clear where Calum's mistakes were to the human eye?

0-1