

Round 5



In the battle of the Cal(l)ums, white tries to play 2 moves at the start of the game

Bremner, Adam	1-0	Steil-Antoni, Fiona
Berry, Neil	0-1	McNab, Colin
Kilpatrick, Callum	1-0	MacQueen, Calum
Burnett, Andrew	1/2-1/2	Sreeves, Clement
Hamitevici, Vladimir	0-1	Michielsen, Joost

New Years' Eve (Hogmanay here in Scotland in case you didn't know) and the thoughts were part-chess/part-party! It would have been hard to guess from the play though as all the games went the distance with Adam and Colin squeezing out wins. The battle of the Cal(l)ums saw an English victory while I failed to convert a great-looking position against Clement Sreeves who was standing in for the still-ill Iain.

It was left to Vlad to try to halt the 'Joost Juggernaut', but his opening plan seemed to back-fire early on and resulted in Joost's smoothest win so far. As the player's left for a night of raucous celebration, Chief Arbiter Andy Howie had lost his voice completely! 'Speechless for the first time' was allegedly uttered by an anonymous source.

(21) Bremner,Adam (2189) – Steil-Antoni,Fiona (2190) [E12]

Winter Chess Festival -Premier(5.1), 31.12.2013

1.c4 e6 2.♘f3 b6 3.d4 ♘f6 4.♙f4 This move first came to prominence when English GM Tony Miles used it to defeat Boris Spassky in the 1978 Olympiad in Buenos Aires. It has no theoretical significance nowadays, but that's not particularly important anyway. 4...♙b7 5.e3 c5 [Miles-Spassky continued 5...♙e7 6.h3 0-0 7.♘c3 d5 8.cxd5 exd5 9.♙d3 c5 10.0-0 ♘c6 11.♘e5 a6 12.♙f3 and white had slightly preferable position.] 6.♙e2 ♙e7 7.♘c3 ♘h5 8.♙xb8 ♙xb8 9.d5 ♘f6 10.e4 exd5 11.exd5 0-0 12.0-0 d6 In general this type of position is better for white 13.♙d3 ♙c8 14.h3 ♙d7 15.a4 a5?! This move I don't like at all, apart from which it is unnecessary. [15...a6 is a standard way to react to a4.] 16.♘d2 ♙c8 17.♙f3 ♙e8 18.♙fe1 ♙f8 19.♙f1 ♙xe1+ 20.♙xe1 ♙d8 21.♙f5 ♙xf5 22.♙xf5 ♙d7 23.♙xd7 ♘xd7 24.f4!

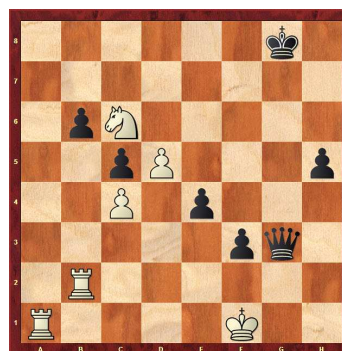


Strong positional play from Adam. He seems to know what the position demands – exchanges to highlight the weaknesses in black's structure, and then limiting the black pieces. Fiona has been too compliant. 24...♘f6 25.♘de4 [25.g4 is also a good move, gaining space.] 25...♘xe4 26.♙xe4 f5?! 27.♙e6 ♙f7 28.♘b5 [28.g4 I think this move ought to be played immediately 28...g6] 28...♙e8 [If 28...♙d8 then 29.g4 g6 30.g5 and white will at some point run black out of moves.] 29.♙xe8? White doesn't seem to have a way to win after this move, so he should have opted for [29.♘xd6+ ♙xd6 30.♙xd6 ♙e4 31.b3 ♙xf4+ 32.♙g1 when b6 falls and with it probably the game.] 29...♙xe8 30.g4 g6 31.♙f2 ♙e7 32.♙g3 ♙g7 33.b3 fxf4?! black should sit tight here when I doubt if white can win. [33...♙d7 and white has to show a winning plan, obvious tries fall short, e.g. 34.♘a7 (34.gxf5 gxf5 35.♙h4 ♙h6; 34.h4 h5 35.gxh5 gxh5 36.♘a3 ♙c3 37.♘c2 ♙e7; 34.♘a3 ♙b2 35.♘c2 ♙e7 36.♘e3 ♙d4 37.♘g2 ♙f6) 34...♙e7 35.♘c6+ ♙d7] 34.hxg4 ♙d7 35.g5 The problem for black now is that white will always be able to force an entry square for his king, and with the q-side pawns the way they are, black will almost certainly be zugzwanged at some point. 35...♙b2 36.♙g4 ♙g7 37.f5 gxf5+ 38.♙xf5 ♙b2 39.♙g4 ♙e5 40.♙h5 ♙g7 41.♘a3 ♙e7 42.♘b1 ♙f7 43.♘d2 ♙e5 44.♙h6 ♙g8 45.♘f3 ♙g3 46.g6 hxg6 47.♙xg6 ♙f8 48.♙f6 ♙e8 49.♙e6 ♙d8 50.♘d2 ♙c7 51.♘b1 b5 52.♘c3 [52.cxb5 also wins, but Adam shows that it's the zugzwang theme which is black's downfall. A very good game overall from Adam, despite the possibly costly mistake at move 28. Not one of Fiona's better efforts, but in general her play has impressed so far.] 1-0

(22) Berry,Neil (2242) – McNab,Colin (2457) [A42]

Winter Chess Festival -Premier (5.2), 31.12.2013

1.d4 d6 2.♘f3 g6 3.c4 ♙g7 4.♘c3 e5 5.e4 ♘c6 6.♙g5 ♙d7 7.♙e3 ♘f6 8.d5 ♘d8N I remember being very surprised by this move when I first saw it played. Where does the knight intend to go from here? b7, as in the game after b6 perhaps, but what do the queen and bishop c8 think about this? 9.♙e2 0-0 10.♘d2 c5 11.♙b1 b6 12.b4 [12.h3 looks like a sensible way to continue and I know Neil has played similar ideas in related King's Indian variations. The equivalent q-side move here, a3, is also sensible. The centre is blocked – a structure I know well from the black side – so matters move to wings. White has more space, and subsequently more scope for manoeuvre. 12...♘e8 13.g4] 12...♘b7 13.0-0 ♘e8 14.bxc5 dxc5 Although white can still claim an edge here, I don't think Neil has caused black as many problems as he might have done. This early exchange on c5 now allows black to use d6 for his other knight, something I would have been loathe to allow unless forced to do so. 15.a4 ♘ed6 16.♘b3 f5 17.f3 h5 18.a5 f4 19.♙f2 g5 20.axb6 axb6 21.♘d2 ♙a6 22.♙a1 ♘a5 23.♙c2 g4 The game has taken on many of the characteristics of a mainline King's Indian Defence, at least on the k-side. White should try to make some progress on the q-side now, which is more open than is usually the case. 24.♘b5! ♙f6 25.♘xd6 ♙xd6 26.♙h1 [26.♙a3 ♙g6 27.♙fa1 looks like a more active alternative. The white king isn't in immediate danger on g1 so isn't forced to move yet.] 26...♙g6 27.♙h4 ♙f7 28.♘b3 ♙f6 29.♙xf6 ♙xf6 30.♙fb1 g3 31.♙f1 [31.h3 ♙h4 32.♙f1 ♘xb3 33.♙xa6 (33.♙xb3 ♙xh3 34.gxh3 g2+ 35.♙xg2 ♙f2 36.♙b2 ♙xb2 37.♙xb2 ♙xa1+ 38.♙h2) 33...♘d4 34.♙a4 ♙xa6 35.♙xa6] 31...♙a7?! [31...♘xb3! This move, which allows the black knight to transfer to d4, would afford black good chances since 32.♙xb3 fails to 32...♙h4 33.h3 ♙xh3 as in the variation given above] 32.♘xa5 ♙h4 33.h3 ♙ag7!? This is Colin's big idea, forcing his way through by means of the typical device ...Bxh3 – it's interesting, but is it sound? 34.♘c6 ♙xh3 35.gxh3 g2+ 36.♙xg2 ♙xg2 37.♙xg2 ♙xg2 38.♙xg2 ♙g3+ 39.♙h1 well, it's certainly good enough for a draw as black could force a repetition here, but is there more? 39...♙xf3+ 40.♙h2 ♙e2+ 41.♙h1 ♙xe4+ 42.♙g1 ♙e3+ 43.♙h2 ♙g3+ 44.♙h1 ♙xh3+ 45.♙g1 f3! despite white's material advantage, it is black who wants to play on; the e- and f-pawns are incredibly dangerous when combined with the queen. 46.♙b2 ♙g3+ 47.♙f1 e4



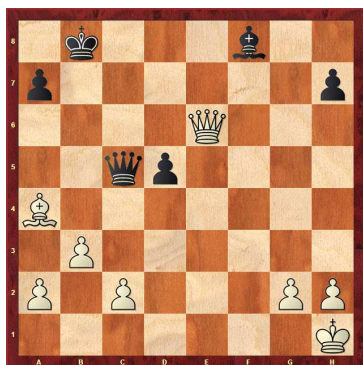
48.♘e7+?? This just loses unfortunately. Uniting and

activating the rooks was the only way to stay in the game as this limits black's actions, e.g. 48.♖a8+! ♕g7 49.♖ba2 ♖f4! avoiding any problems on the g-file and hoping for (49...e3?? 50.♖2a7+ ♕f6 51.♖f8+ ♕g5 52.♖g7+ ♕h4 53.♖xg3 ♕xg3 54.d6) 50.♖2a7+? (but 50.♖e8 looks like a good way of combining the rooks yet again against the black king. The pawns are scary, but white should have enough firepower to force a draw 50...e3 51.♖a7+ ♕h6 52.♕e5 e2+ 53.♕f2 ♖h2+ 54.♕xf3 e1♖ 55.♖e6+ ♕g5 56.♖g7+) 50...♕h6 51.♖h8+ ♕g5 52.♖g8+ ♕h4 when the king hides and black wins] 48...♕f8 49.♖e1 ♖h3+ 50.♕g1 ♖g4+ 51.♕f1 ♕xe7 and white is just lost 52.♖h2 ♖f4 53.♖xh5 e3 54.♖h7+ ♕f6 55.♖b1 ♖xc4+ 56.♕g1 ♖g4+ 57.♕f1 ♖g2+ 58.♕e1 ♖e2# A painful defeat for Neil, but a good example of Colin's abilities. Even from dubious-looking openings he is able to create problems for the opponent, and given half a chance he is generally deadly. 0-1

(23) Kilpatrick, Callum (2350) – MacQueen, Calum (2240) [B30]

Winter Chess Festival -Premier(5.3), 31.12.2013

1.e4 c5 2.♗f3 ♗c6 3.♖b5 e6 4.0-0 ♗ge7 5.b3 d6 [RR 5...♖c7 ; RR 5...♖b6] 6.d4 cxd4 7.♗xd4 e5! Perhaps this is known to the players in this game, but I confess to having never seen this before. [RR 7...a6 8.♗xc6 ♗xc6 9.♖xc6+ bxc6 10.♖b2 d5 11.exd5 cxd5 12.♗d2 ♖b7 13.♖e1 ♖d7 14.♖g4 h5 15.♖g5 ♖h6 16.♗f3 f6 17.♖e3 ♕f7 18.♖ad1 ♖e8 19.c4 ♖d6 20.♗h4 ♖b8 21.♖d2 g5 22.♗f3 Shaw,J (2454)–Hennigan,M (2400)/West Bromwich 2005,1-0 (44)] 8.♗xc6N bxc6 9.♖a4 ♖c7 10.f4! Not for any intrinsic value in the move, but simply to point out that continuing automatically with 10.♖b2 makes little sense after 10...♗g6 when the f4-break is hard to invoke and, without it, the Bb2 is misplaced. Having said a), don't just say b) because it's next in the alphabet! Look at what the position demands also! 10...exf4 11.♖xf4 ♗g6 12.♖d4 ♖d7 [12...♗xf4 looks natural; the bishop is very active on f4 13.♖xf4] 13.♕h1 ♖e7?! I don't really understand or see the need for this move?! [both 13...♖b6 14.♖e3; and 13...♗xf4 14.♖xf4 ♖b6 are preferable] 14.♖xg7 0-0-0 15.♖d4 ♗xf4 16.♖xf4 ♖e6 17.♗c3 d5?! and unfortunately for black this just doesn't work. 18.exd5 ♖xd5 19.♗xd5 cxd5 20.♖xf7 ♖c5 21.♖e5 ♖d6 22.♖e6+ ♕b8 23.♖af1 ♖hf8 24.♖xf8 ♖xf8 25.♖xf8+ ♖xf8



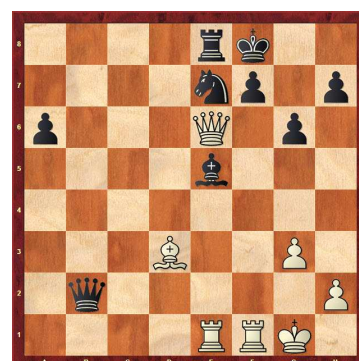
26.♖e8+ [26.♖c6! is an easier way to win as saving the d-pawn loses to 26...d4 27.♖e8+ ♕c7 28.♖d7+ ♕b6 29.♖b7+ ♕a5 30.b4+ ♖xb4 31.♖xa7#] 26...♕c7 27.♖d7+ ♕b6 28.♖d8+ ♕b7 29.♖d7+ ♕b6 30.♖e6+ ♕

c7 31.♖e2 ♖d4 32.♖b5 ♖c5 33.♖f1 ♕b6 34.♖d3 h5 35.g3 h4! It might have been a good idea to just sit on the position and ask white how he intended to make progress? [35...♕a5 36.♕g2 ♕b4 37.♖f3 and only now 37...h4] 36.♕g2 hxg3 37.hxg3 a5 38.a4 ♖e3 39.♖f6+ ♕b7 40.♖f7+ ♕b6 41.♖xd5 ♖d2+ 42.♕h3 ♖h6+ 43.♕g4 ♖g7+ 44.♖g5 ♖d7+ 45.♖f5 ♖d4+ 46.♕h3 ♖e3 47.♖g6+ ♕c7 48.♖e4 ♖f2 49.♖c6+ ♕d8 50.♖d5+ ♕c7 51.♖e5+ ♕d8 52.♖g5+ ♕d7 53.♖f5+ and with the queens coming off it's game over. 53...♖xf5+ 54.♖xf5+ ♕e7 55.g4 ♕f6 56.♕g3 ♕e5 57.♕f3 ♖b6 58.♖e4 ♖d8 59.♕e3 Kd5 1-0

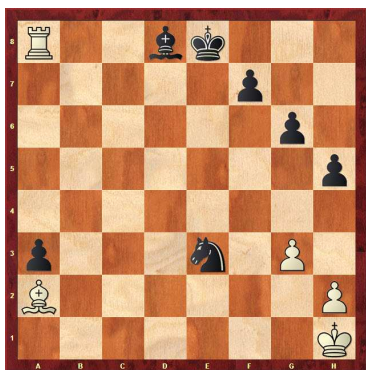
(24) Burnett, Andrew (2209) – Sreeves, Clement (2254) [A34]

Winter Chess Festival -Premier (5.4), 31.12.2013

Next competitor to step up to the plate replacing Iain was Clement: a bit of a surprise to be playing him as I had replaced him in the starting list when he realised he had too much study to catch up on! 1.c4 b6 A surprise! 2.♗c3 ♖b7 3.♗f3 e6 4.e4 c5 5.d4 cxd4 6.♗xd4 a6 Now we have transposed to a Sicilian Defence. My next move isn't particularly good, but the idea was to get Clement thinking at an early stage. 7.♖e2 ♖c7 [7...♗f6 8.g4!? was the idea. White takes on responsibility on both sides of the board but asks black to find an answer over-the-board.] 8.g3 g6!? I wasn't too impressed by this idea. A normal Scheveningen/Hedgehog-type structure should be fine for black, e.g. [8...d6 9.♖g2 ♗d7 10.♖d2 ♖c8 11.b3 ♖e7 12.0-0 ♗gf6] 9.♖g2 ♖g7 10.♖e3 ♗e7 11.0-0 d6 12.♖ad1 0-0 13.f4 ♗bc6 [13...♗d7 may be more accurate. The game move encounters some tricky little problems] 14.♗xc6 ♗xc6?! the other re-captures may look a little awkward, leaving the knight on e7 temporarily without a life, but this 'natural' move has a tactical flaw. 15.♖f2 and now b6 can't be defended, so... 15...♗e7 16.e5! [The initial plan had been 16.♖xb6 ♖xc4 17.♖xd6 but once I had spotted the text move I had a feeling it would be much more difficult to meet.] 16...dxe5 17.♖xb6 ♖c8 [17...♖xc4?? 18.♖xb7; 17...♖b8 is better] 18.♗e4 Clement took an age here and I convinced myself that I was already completely winning. 18...♖xe4 19.♖xe4 ♖b8 20.♖a7 ♖xc4 21.♖xb8 ♖xb8 22.♖a7!? Not a bad move, forcing the rook to go passive, but perhaps the original idea [22.fxe5 was better?! 22...♗f5 23.♖xf5 gxf5 24.b3 ♖c7 and although e5 falls, white should be much better if he is careful.] 22...♖e8 23.♖d3 ♖xa2 24.♖d7 ♕f8 25.fxe5 ♖xe5 26.♖de1 The position I was aiming for with 22.Qa7, but it's still not as clear as I had thought at the time. 26...♖xb2 [26...♖a5!? is also possible, but grabbing the b-pawn looks sensible.] 27.♖xe6



h5! this defence, which I had actually seen, throws the cat amongst the pigeons, particularly with time getting short. It is now white's king who is under threat! **28.♖d5?!** [28.♖xa6!? looked very risky, and as the clock ticked down I thought it would be safer to keep my queen close to hand.] **28...♗d4+ 29.♗h1 ♖xe1 30.♖xe1 ♗e3!?** [30...♗d2! is very difficult for white to meet. The plan is 31.♖a8+ ♗g7 32.♖e4 ♗f2 33.♖a1 ♗xg3 34.hxg3 ♗xg3+ forking king and queen, so white would have to ignore the bishop g3.] **31.♖f3?** going astray [31.♖a8+ ♗g7 32.♖e4! still holds out some hope of an advantage, the main point being that now 32...♗d2 33.♖xd4+ is check. I missed this detail and now black gains the upper hand.] **31...♗d2 32.♖e2 ♖c3 33.♗e4** [33.♗xa6 ♖c6+ 34.♗g1 ♗g4+ is deadly, but now the a-pawn becomes a serious threat.] **33...a5 34.♖b1 a4 35.♖d3 a3 36.♖xc3 ♗xc3 37.♖b8+ ♗e7 38.♖a8 ♗b4** [38...♗b2 looked more natural] **39.♗b1 h5 40.♖a7+ ♗e8?!** last move of the time-control and a serious error. The king should have stayed active. [40...♗f6 41.♗a2 ♗e7!] **41.♗a2 ♗e7 42.♖a8+ ♗d8**



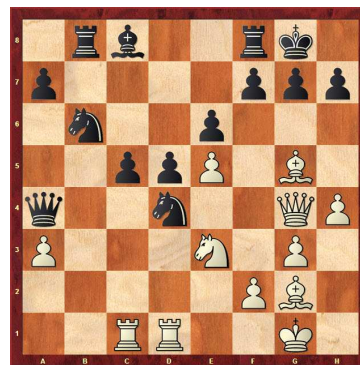
43.♖xa3? Misjudging the ending after [43.♗xf7+! ♗xf7 44.♖xd8 ♗c2 45.♖a8 ♗e6 when I failed to realise that my king could head for the k-side pawns instead of heading for the knight c2. Black would have to give up the a-pawn and try to hold the 2vs 2 on the k-side, but this isn't easy at all. 46.♖a5 ♗d6 47.♗g2 ♗c6 48.♗f3 ♗b6 49.♖a8 ♗b7 50.♖a4 ♗b6 51.♗f4 ♗b5 52.♖a8] **43...♗g4 44.♖a8 ♗e5 45.♗g2 ♗e7 46.h3 ♗b6 47.♖a6 ♗c5 48.♗d5 ♗d4 49.♗f1 ♗c5 50.♗e2 ♗d4 51.♗a2 ♗c5 52.♗d5 ♗d4 53.g4 hxg4 54.hxg4 ♗b2 55.♗f3** what else? I hoped Clement would make a mistake around here, but the draw is actually very easy to hold. **55...♗xf3 56.♗xf3 ♗c3 57.♗e4 ♗b2 58.♗d5 ♗c3 59.♖c6 ♗b2 60.♖c2 ♗a1 61.g5** and now all black has to do is attack g5 and hide his king on g7. **61...♗f8 62.♖f2 ♗g7 63.♗d6 ♗f8 64.♗d7 ♗d4 65.♖f3 ♗b2 66.♖b3 ♗c1 67.♖b5 ♗d2 68.♖d5 ♗c1 69.♖b5** A hard-fought game, and very well-defended by Clement, but a big disappointment for me after the early-middle-game seemed to promise so much! Still winless and due to face the top 2 seeds in the next two rounds! Hmmm.... 1/2-1/2

(25) Hamitevici, Vladimir (2508) – Michiel-sen, Joost (2343) [C00]

Winter Chess Festival -Premier(5.5), 31.12.2013

1.e4 c5 2.♗f3 e6 3.g3 d6 Quite a tame response to white's KIA plans. More usual, if black hasn't played 2...d6 already, is to aim for the ...d5 break on one go. **4.♗g2 ♗f6 5.♖e2 ♗c6 6.0-0 ♗e7 7.c3 0-0 8.d4 d5 9.e5**

♗d7 [RR 9...♗e4 10.♖d1 ♗d7 11.♗e1 cxd4 12.cxd4 ♖b6 13.♗e3 f5 14.f3 ♗g5 15.♗c3 ♗a5 16.♗d3 ♗b5 17.♗xb5 ♖xb5 18.♖ac1 ♖ac8 19.♗f1 ♗f7 20.♗f4 ♖xe2 (RR 20...♖d7 21.♖b5 ♗c6) 21.♗xe2 ♗g5 22.♗f2 ♗xf4 23.♗xf4 ♖xc1 24.♗xc1 Spassky,B (2555)–Cramling,P (2545)/ London 1996, 1-0 (61)] **10.♖d1 ♖b8 11.h4 b5 12.♗bd2 b4 13.♗f1 bxc3 14.bxc3 ♖a5 15.♗d2 ♗b6** [Black has other possibilities here also, e.g. 15...♖b2 and; 15...♗a6 and it looks like his play is both slightly quicker than white's and also more meaningful. The rook on d1 is not great help.] **16.♗g5 ♗xg5 17.♗xg5 ♖xc3 18.♖ac1 ♗xd4! 19.♖g4 ♖b4 20.a3!?** [20.♗e7 is the most forcing move, hitting f8 and c5 simultaneously. But after 20...♗b5 21.♖xb4 cxb4 22.♗xf8 ♗xf8 It's fairly clear that white's position is still bad in terms of quality.] **20...♖a4 21.♗e3**



♗a6 [I'm not sure why Joost refrained from the obvious-looking 21...♗b3!? Perhaps he was afraid of the kamikaze variation 22.♖h5 ♗xc1 23.♖xc1 (23.♗g4 ♖xd1+ 24.♗h2 ♖c2 covers everything) 23...♖xa3 24.♗g4 Even here though white has no real immediate threat as the rook will hang on c1 with check in many lines, therefore black can defend quite easily. The game continuation is safer, though, so I'm being particularly critical here.] **22.♖xc5 ♗e2+ 23.♗h2 ♖xg4 24.♗xg4 ♗c4 25.♗f3 ♗c3 26.♖d4 ♖b3 27.♗e7 h5!** [and not falling for the ghastly trick 27...♖e8?? 28.♗f6+ gxf6 (28...♗h8 29.♗xe8) 29.♖g4+ ♗h8 30.♗xf6#] **28.♗xf8 hxg4 29.♗xg7 ♗xg7 30.♖xg4+ ♗f8 31.♖g5 ♗d2 32.♗h5 ♗ce4** and faced with even more material losses white resigned. Not Vlad's finest moment in Edinburgh, but yet another strong display from Joost who was now on 5/5! **0-1**