



1st
Edinburgh
Winter Chess
Festival

27th December 2013 to 5th January 2014

in Edinburgh Chess Club

The organiser's view

“ Scotland has had numerous talented young players reach 2200, but many of those talents struggle to make it much further. One of the reasons for this is thought to be the lack of opportunities to play against titled opposition in Scotland. Hence the idea to give our talent 2200-rated players a chance test themselves against strong opposition became appealing and ultimately led to the creation of the IM norm event.



Photo by: Fiona Steil-Antoni

The organisation was very challenging and probably too much to take on by myself, but it was very satisfying to see it all running smoothly and that Callum Kilpatrick gained an IM norm – a fantastic achievement and another historic moment for the club. Hopefully next year's tournament will build on this success. Might see you there!”

-David Oswald

Round 1



FM Iain Swan facing GM Colin McNab's favourite Modern Defence

Hamitevici, Vladimir	1/2-1/2	Steil-Antoni, Fiona
Burnett, Andy	0-1	Kilpatrick, Callum
Bremner, Adam	0-1	Berry, Neil
Michielsen, Joost	1-0	MacQueen, Calum
Swan, Iain	0-1	McNab, Colin A

So the tournament kicks off with the big boys against the norm chasers.; would any of the lower-half rise to the challenge? Well, it wasn't to be me! A good opening was followed by a dubious middle-game and Callum played very accurately to put me away. Good wins also from Neil, Joost and Colin seemed to have sealed the 1st round in favour of...the favourites!

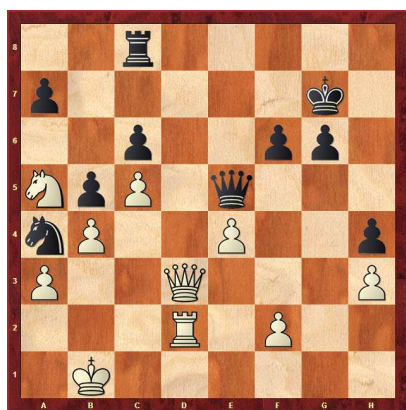
However, Luxembourg's top female player showed that when it comes to dealing with your boyfriend, on the chessboard she was at least a match. A topsy-turvy affair ended in a long draw, with Fiona missing a golden chance to win, but she proved that she was certainly no pushover despite being the lowest-rated player in the field. A first-round full of fighting chess - and exactly how it would continue .

(1) Hamitevici,Vladimir (2457) – Steil-Antoni,Fiona (2190) [D00]

Winter Chess Festival (1.1), 27.12.2013

The top board in the 1st round and we see the highest-rated player pitted against the lowest. Add in to the equation the fact that it is boyfriend versus girlfriend and we have all the makings of an interesting tussle. A short draw? Never!

1.d4 d5 2.♗g5 Vladimir seems to prefer non-theoretical tussles; his 2500-rating is off the back of strong middle-game play and the Trompovsky is ideal for creative, complex play. **2...♟f6 3.♗xf6 exf6 4.e3 ♗d6 5.g3 c6 6.♗g2 ♗f5 7.♟e2 ♖d7** **8.♟f4 ♗xf4** [8...g6 looks better. I would have preferred to delay the capture on f4 for as long as possible – if we continue as in the game... **9.a3 h5 10.♟d2 h4 11.c4 hxg3 12.hxg3 ♖xh1+ 13.♗xh1 ♗xf4 14.gxf4 dxc4 15.♟xc4 ♟a6** ...and black might find the h-file useful for her other rook at some point.] **9.gxf4 ♟a6 10.a3 h5 11.♟d2 h4 12.c4 ♖h6** this rook never seems to settle **13.♖b3 ♖g6 14.♗f3 dxc4 15.♟xc4 ♟f8 16.0-0-0 b5 17.♟a5 ♖c8 18.e4 ♗g4 19.f5 ♗xf3 20.♖xf3 ♖h6 21.b4 ♖e7 22.♟b2 ♟b8 23.h3 ♟d7 24.♖f4 ♟b6 25.♖c1 ♖d7 26.♖hd1** White has secured a decent space advantage and can claim to be slightly better so long as he prevents any black counter-play against his king. **26...♖h5 27.♖g4 ♖h6 28.♖f4 ♖h5 29.♖d2 ♟g8 30.♟a2 g6 31.fxg6** [31.♖g4 This move looks better to me, retaining the tension and letting black worry about her weaknesses on both sides of the board.] **31...♖e6+ 32.♟a1 fxg6 33.♖f3 ♟g7 34.♖c5 ♖xc5 35.dxc5 ♖e5+ 36.♟b1 ♟a4 37.♖d3?!** Time-trouble? White allows black a tactical shot



37...♖c7?! which Fiona misses! [37...♖xe4 38.♖xe4 ♟c3+ 39.♟c2 ♟xe4 regains the queen and wins a pawn, although white should still be fine because of the weakness on c6.] **38.♟c2??** and this is an outright blunder... **38...♖e6??** which black fails to spot! [38...♖b2+ 39.♟d1 ♟c3+ 40.♟e1 ♖c1+ wins fairly simply.] **39.♟b3 ♖e7 40.f3 ♖xh3 41.♟d4 ♖c8 42.f4** White's forces coordinate well now so it's a surprising time to offer a draw. perhaps Vladimir realised he'd got out of jail free a couple of moves ago and didn't want to tempt fate by playing on?! All-in-all an interesting game and one which set the mood of the tournament for hard battles and very few quick draws.

1/2-1/2

(2) Burnett,Andrew (2209) – Kilpatrick,Callum (2350) [E73]

Winter Chess Festival – Premier (1.2), 27.12.2013

1.d4 ♟f6 2.c4 g6 3.h4!? Readers of Chess Scotland magazine will notice that this move wasn't my preparation for playing Callum. There is a story behind this change of heart: Callum's arrival for the 1st round was delayed by over an hour – just before he finally appeared Clement Sreeves mentioned, "He'll be here soon – I've just spoken with him". Hmmm, would this be the same Clement who I had played a few weeks earlier, and on which game I had based my preparation for Mr Kilpatrick? If they are friends, and Callum has done any preparation at all for our game, then I guessed it might focus on my Grunfeld encounter with Clement. So....plan B, the aggressive 3.h4, which I had very briefly looked at the previous evening. **3...♗g7** [3...d5 The normal choice of a Grunfeld player such as Callum would not be so good immediately because after 4.cxd5 ♟xd5 5.e4 there is no knight on c3 for black to exchange, and otherwise white gets to develop comfortably, with h5 always being a threat.] **4.♟c3 0-0** [and now 4...d5 5.h5 is a little uncomfortable for black 5...♟xh5 6.cxd5 c6 7.e4 cxd5 8.e5 and black must go into reverse with 8...♗f8 because g4 threatens to win the stranded knight.] **5.e4 d6** So, my move order has brought us a King's Indian Defence where the inclusion of h4 is generally fine for white. If black wants to prove it weak or unnecessary, he should look for a different set-up here, perhaps involving ...c5 **6.♗e2 e5 7.d5 ♟bd7 8.♗e3 ♟c5 9.♖c2 a5 10.h5 ♟g4?!** I was pleased to see this move as I felt it gave me extra tempi for attacking on the k-side. **11.♗xg4 ♗xg4 12.f3 ♗d7 13.g4 a4**



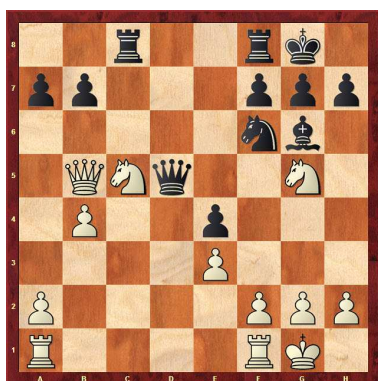
14.♖d2?! but around here I start to drift. The position probably demands some concrete play already. I have set out my stall and should now play the obvious [14.hxg6 fxg6 15.♖h2 simply allowing the check on d3. Instead, thinking I had time to prepare my k-side attack, I actually dithered too long.] **14...♖e7 15.♟ge2 ♖fb8 16.♟g3 b5 17.cxb5 ♗xb5 18.♗xc5 dxc5 19.g5 ♗d7** white may still be fine here, but I wasn't comfortable **20.d6** [20.♖c1 a3 21.b3 c4 22.bxc4 ♖b2 doesn't exactly inspire confidence] **20...cxd6 21.♟d5 ♖d8 22.0-0?** [22.♟e2 intending to back up the knight on d5 is the only way to stay in the game] **22...♗e6 23.hxg6 hxg6 24.♖f2 ♗xd5 25.exd5 ♖b4!** Not only is black a pawn to the good, but d5 will fall soon and black's pieces will be very active.

26.♞e1 ♞d4 27.♞e3 ♞xd5 28.♜e4 ♞d4 29.f4 d5 30.♜xc5 exf4 31.♞h3 ♞a5 32.♞c1 ♞c4 33.♞xc4 dxc4 34.♞f3 ♞e8 35.♞xf4 ♞e1+ 36.♜g2 ♞xc5 37.♞xf7+ ♜h8 A rather discouraging start for me, but a very good example of Callum's play. Strategically strong and clinical to the end. 0-1

(3) Bremner,Adam (2189) – Berry,Neil (2242) [D31]

Winter Chess Festival – Premier (1.3), 27.12.2013

1.d4 d5 2.c4 e6 3.♜c3 ♞b4 Neil's new wonder-weapon as black. A hybrid move of the Nimzo-Indian and Vienna variations, it forces white to think early on about what he wants from the opening. 4.e3 c5 5.dxc5 ♜f6 6.♞d2 ♜c6 7.♜f3 0-0 8.♞e2 dxc4 9.♞xc4 ♞xc5 10.0-0 e5 11.♜g5 ♞f5 12.♞b3 ♞g6 Black is already comfortably placed as white's B on d2 is a little awkward, as is the positional threat of Na5 followed by taking the bishop on c4. Adam seeks solace in a tactical solution. 13.♜a4 ♞xd2 14.♜xc5 ♜a5 15.♞a4 ♜xc4 16.♞xc4 ♞ac8 17.♞b5 ♞d5 18.b4 e4



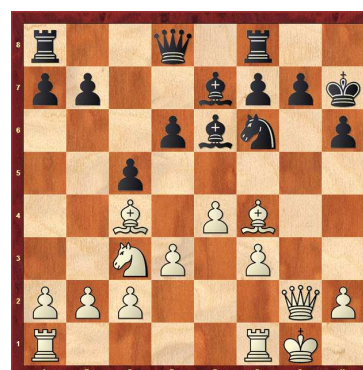
Which backfires as the twin threats of ...Qxg5 and ...b6, which wins the other knight, prove too difficult to counter. 19.♜h3 b6 20.♜f4 ♞f5 21.♞ac1 bxc5 22.bxc5 ♞e5 23.♞a5 ♞c7 24.♞c2 ♞fc8 25.♞fc1 h6 26.h3 ♞f5 27.♜e2 ♜d7 28.♜d4 ♞e6 29.♜b3 ♞xb3 30.axb3 ♞xc5 31.♞xc5 ♞xc5 32.♞xc5 ♞xc5 33.♞d8+ ♜f8 and now all that is required is a little patience and accuracy to bring home the point. 34.♞a8 ♞c1+ 35.♜h2 ♞c7+ 36.g3 ♞c2 37.♜g2 ♞xb3 38.♞xa7 ♞d1 39.♞a8 ♞f3+ 40.♜g1 g6 41.♞e8 ♜g7 42.♞e5+ ♜h7 43.h4 ♞f5 44.♞e8 ♜d7 and this move finishes things off; the extra knight re-emerges with deadly effect to f3 or g4 via e5. An excellent game typical of Neil's play with the black pieces. 0-1

(4) Michielsen,Joost (2343) – MacQueen,Calum (2240) [B30]

Winter Chess Festival –Premier(1.4), 27.12.2013

This was an interesting match-up. Calum on form might well be a contender for the IM norm score whilst Joost was a bit of an unknown quantity, though obviously a strong player. 1.e4 c5 2.♜f3 ♜c6 3.♜c3 e5 4.♞c4 ♞e7 5.d3 d6 6.0-0 ♜f6 7.♜g5 This aggressive move, designed to allow for the f4-break, has lost favour over the last few years. However, it is not easy for black to meet. 7...0-0 8.f4 ♞g4 9.♞e1 exf4 10.♞xf4 ♜d4 11.♞d2

[11.♞h4!? is an aggressive alternative, but not necessarily better than Joost's move in the game. 11...h6 (white's idea is seen in the following variation; not forced, but typical of the Grand Prix Attack-type of position which we have reached here. 11...♜xc2 12.♞ac1 ♜d4 13.♞xd6 ♞xd6 14.♞xf6 and h7 is critically weakened)] 11...h6 12.♜f3 ♜xf3+ 13.gxf3 ♞e6 14.♞g2 ♜h7



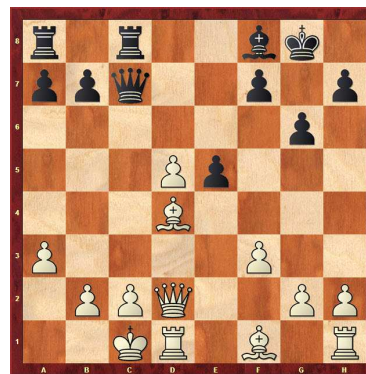
15.♞xe6N The first new move, but I don't think white should be in any hurry to exchange on e6 here. Should black eventually exchange on c4, then white has d6 as an easy target. [RR 15.♞ae1 ♞d7 16.♞xe6 fxe6 17.♜h1 ♞e8 18.♞g1 ♞f7 19.♞c1 a6 20.f4 ♜h5 21.♞ef1 b5 22.f5 b4 23.♜e2 e5 24.♞f3 ♞f6 25.♞h3 ♜f4 26.♜xf4 exf4 27.♞xf4 ♞e5 28.♞xh6 ♜g8 (28...gxf6 29.♞xh6+ ♜xh6 30.♞h3+ ♞h5 31.♞g6+ ♜h7 32.♞xh5#) 29.♞c1 ♞xa2 Guseinov,G (2571)-Pinheiro Lung,A/Dos Hermanas 2004/EXT 2005/1-0 (41); 15.♜h1 ♞d7 16.♞g1 ♞g8] 15...fxe6 16.♞d2 ♞d7 17.♜h1 ♞g8 [17...♞f7 might be a more flexible set-up for black here, as allowing the white queen access to g6 is hardly terminal – though obviously it is at least optically frightening. 18.♞g1 ♞af8 19.♞g6+ ♜h8 20.f4 b5 and black will have good counterplay.] 18.f4 g6 19.♞ae1 ♞ae8 20.♞f3 d5 21.f5 gxf5 22.exf5 exf5 23.♞xf5+ ♞xf5 24.♞xf5 ♞d8 [24...d4 25.♜b5 would present black with the same problems as in the game – his pawns are weaker and easier to attack.] 25.♜xd5 ♞xe1+ 26.♞xe1 ♜g6 27.♜xf6 ♞xf6 28.♞xc5 ♞xb2 29.♞b5 ♞d4 30.♞xb7 ♞e8 31.♞g3 ♞e2 32.♞c7 ♜f5 33.♞c4 ♞b6 34.a4 h5 35.h3! Joost snuffs out the last vestiges of black's activity – now when his rook goes wandering, the black king won't be allowed entry on the k-side. 35...♞d2 36.a5 ♞d8 37.♞c5+ ♜g6 38.♜g1 ♞d1+ 39.♜g2 ♞a1 40.♞f2 h4 41.♞c6+ ♜f5 42.a6 and black had seen enough. A very well-controlled game from Joost, which was to be a feature of his play throughout the tournament. 1-0

(5) Swan,Iain (2263) – McNab,Colin (2457) [B07]

Winter Chess Festival—Premier(1.5), 27.12.2014

1.e4 g6 2.d4 d6 3.♜c3 ♞g7 4.♞e3 ♜f6 5.♞d2 0-0 Avid readers of Chess Scotland magazine will notice that this opening was also part of my own preparation for playing Colin, so I was (unpleasantly) surprised to see him play 5...0-0 instead of his old favourite 5...c6 6.f3 This is Iain's usual response to the Pirc/Modern, often leading to an aggressive k-side display from white. 6...e5 7.d5!? I was

a little surprised by this move, although it's by no means bad. [7.♖ge2 exd4 8.♗xd4 d5 would have transposed directly into a line of the Philidor (Larsen's Variation) which is thought to be quite good for black.] 7...c6 8.0-0 cxd5 9.♗xd5 ♗xd5 10.♖xd5 ♕e6 Black sacrifices a pawn (at least) in order to launch a quick assault down the open files towards white's king. This may or may not be 'theoretically' viable, but in practice it is the kind of position that is hard to defend and in which Colin can display his excellent eye for the initiative. 11.♖xd6 [11.♖xb7 This may be a better way to take the material on offer as white's queen and rook are less passively placed. The tactics likely to appear, however, are quite difficult and scary to predict in advance. 11...♗d7 12.♖xd6] 11...♖a5 12.a3 ♖c8 13.♖d2 ♖c7 14.♗e2N [RR 14.♕d3 ♗c6 15.♗e2 b5 16.♕xb5 ♖b7 17.♕xc6 ♖xc6 18.♗c3 ♖b8 19.b4 ♕f8 20.♗d5 a5 21.♖d3 axb4 22.axb4 ♕xb4 23.♕h6 ♕xd5 24.♖xd5 ♕a3+ 0-1 Nevednichy,V (2537)-Delchev,A (2557)/Nice 2002/CBM 089 ext] 14...♕f8 15.♗c3 ♗c6 16.♗d5?! Iain either misses, or mis-assesses the resulting combination. [Both the counter-attacking 16.h4 and; the safety-first move 16.♖b1 are better options] 16...♕xd5 17.exd5 ♗d4 18.♕xd4? but only this move is completely wrong [again 18.♖b1 is a decent move, and after 18...♖xc2+ (18...♗xc2? 19.♖c1) 19.♖xc2 ♗xc2 20.♕g5 white can probably claim a slight advantage]



18...♕h6! 19.♕c3 ♕xd2+ 20.♖xd2 ♖d6 21.♕b4 ♖f6 22.d6 a5 23.♕c3 [23.d7!? might be a slight improvement as it leads to similar positions as the game, but without white's q-side pawns being disrupted. 23...axb4 24.dxc8 ♖+ ♖xc8] 23...♖xc3 24.bxc3 ♖d8 Black is now clearly winning and although Iain fights hard to the end, Colin's technique is up to the task. 25.♕b5 ♖xd6 26.♖xd6 ♖xd6 27.a4 ♖a3+ 28.♖d2 ♖e7 29.♖e2 ♖c5 30.♖e1 ♖xc3 31.♖f1 ♖g7 32.♖e2 f5 33.h3 ♖d4 white's pieces are as well-placed defensively as they can get, but black's pawn advances on the k-side will force white to make moves he would rather not make. 34.g3 ♖f6 35.♖g2 h5 36.♖f2 h4 37.♖e2 hxg3 38.♖xg3 ♖g1+ 39.♖h4 ♖g5# A very well-played game from Colin against a difficult opponent.

0-1



Photo by: David Oswald

All's fair in love and war. Vlad's Trompovsky met with strong resistance from girlfriend Fiona